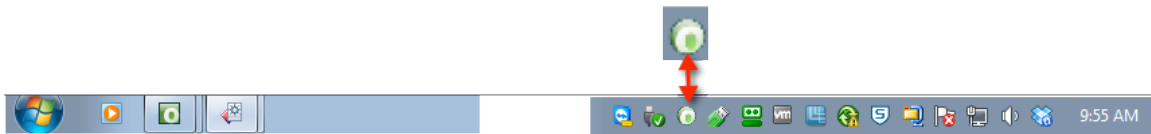


The OnBase Unity Client does not log you out when you close the program by clicking the red X at the top right of the window. This is handy because you can close and reopen without logging back in.

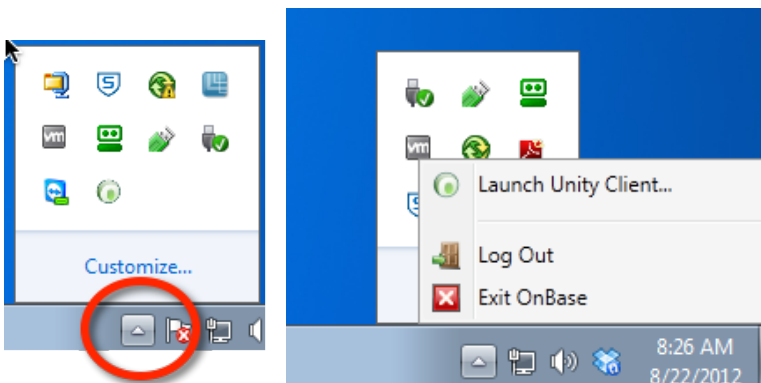
Once you have closed Unity, clicking the icon on your desktop will not relaunch the program. You must use the icon in the Task Bar.



If you don't see the icon, look for a tiny "up" arrow.



Click that, then find the Unity icon. Right click the icon and pick "Launch Unity Client."



This is where you also go to log out and to completely exit the program.

If you do not see the Unity icon in the tray, then you will be able to launch the program from your desktop icon, or from the START menu: START->All Programs->Hyland->Hyland Unity Client.

For more information on the OnBase Unity Client, go to Document Retrieval and under 1Manuals & Videos, look for the Unity 12 manual.