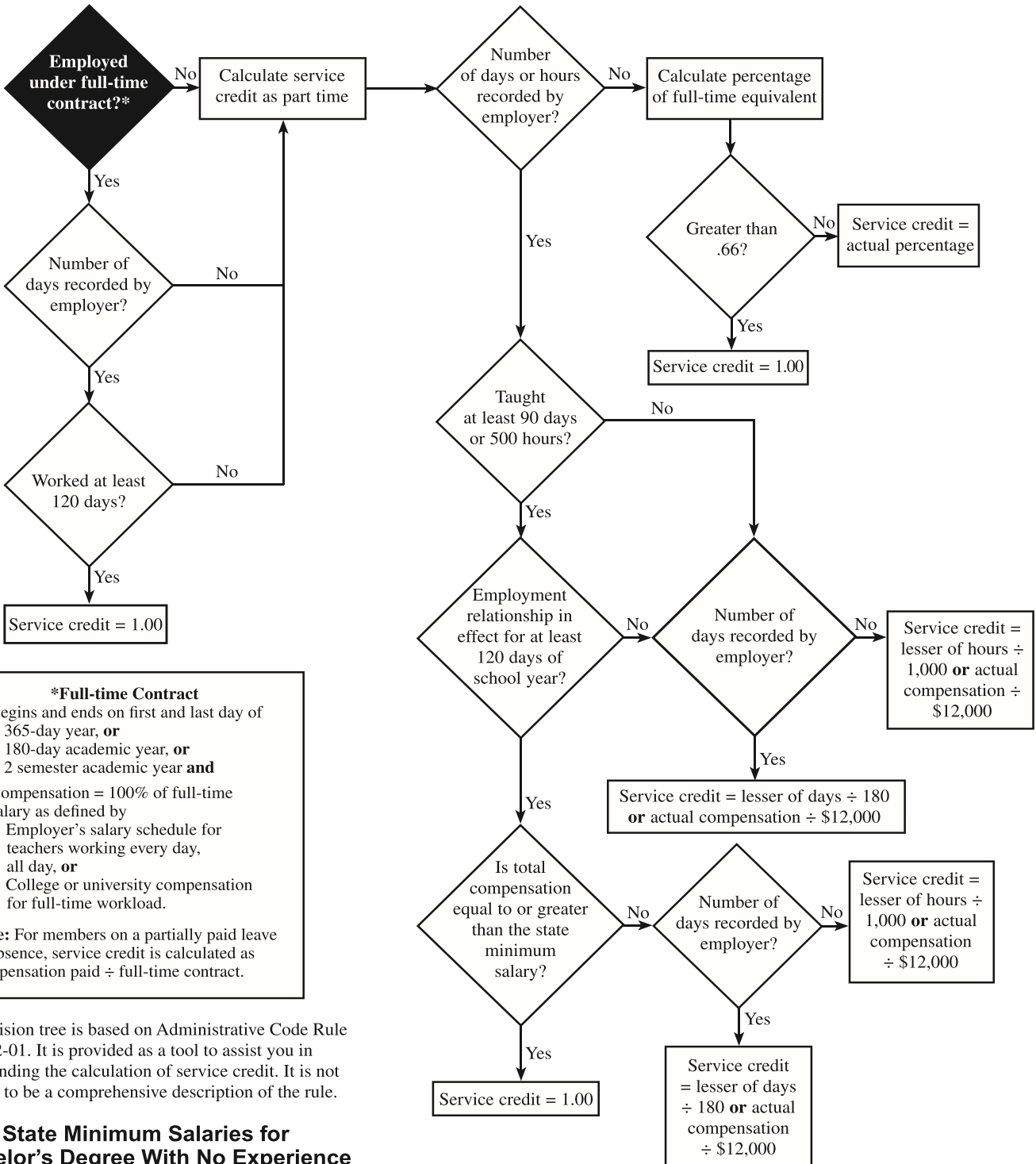




Service Credit Decision Tree (Effective July 1, 2019)



***Full-time Contract**

- Begins and ends on first and last day of
 - 365-day year, **or**
 - 180-day academic year, **or**
 - 2 semester academic year **and**
- Compensation = 100% of full-time salary as defined by
 - Employer's salary schedule for teachers working every day, all day, **or**
 - College or university compensation for full-time workload.

Note: For members on a partially paid leave of absence, service credit is calculated as compensation paid ÷ full-time contract.

This decision tree is based on Administrative Code Rule 3307:1-2-01. It is provided as a tool to assist you in understanding the calculation of service credit. It is not intended to be a comprehensive description of the rule.

State Minimum Salaries for Bachelor's Degree With No Experience

Fiscal Year	Salary
2019–2020	\$20,000

(continued)

Full-Time vs. Part-Time Service

	Full Time	Part Time
Contract Length	Covers the entire school year.	Covers only a portion of the school year.
Compensation	<p>100% of the full-time salary defined by salary schedule</p> <p>and</p> <p>works at least 120 days.</p>	<p>Does not equal the salary schedule for teacher working every day of the school year</p> <p>or</p> <p>does not meet requirements for full-time employment.</p>

Calculating Part-Time Service Credit (Effective July 1, 2019)

Employment Status	Days Worked	Days in Employment Relationship	Is Salary Greater Than State Minimum?	Service Credit Calculation
Part Time	≥ 90	≥120	Yes	1.00
	≥ 90	≥120	No	Lesser of: Days ÷ 180 or Actual Compensation ÷ \$12,000
	≥ 90	<120	N/A	Lesser of: Days ÷ 180 or Actual Compensation ÷ \$12,000
	<90	N/A	N/A	Lesser of: Days ÷ 180 or Actual Compensation ÷ \$12,000