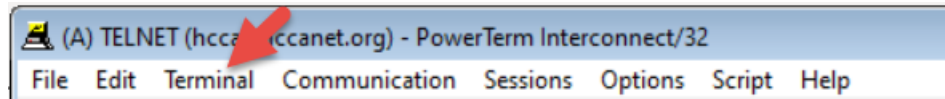




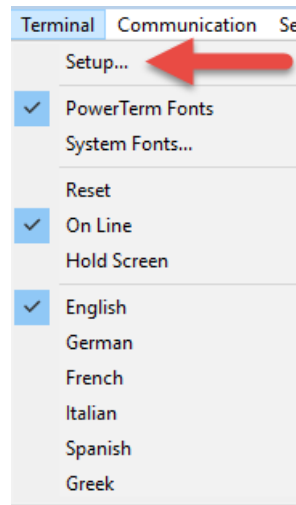
# PowerTerm Keyboard Mapping Setup

Steps to configure PowerTerm keyboard:

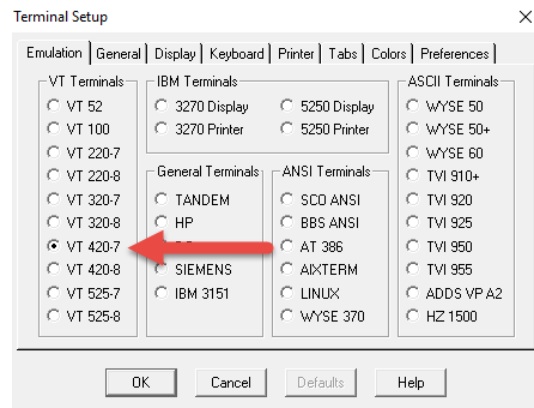
Inside PowerTerm,  
select Terminal.



Then select Setup.



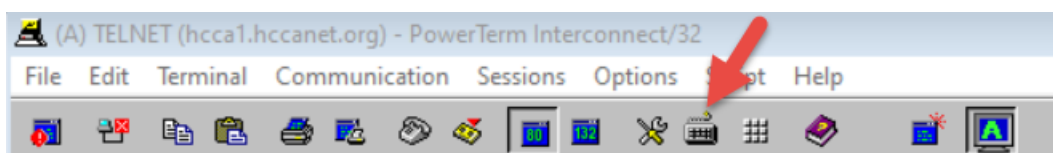
Make sure VT 420-7 is selected and select 'OK' to select this option.



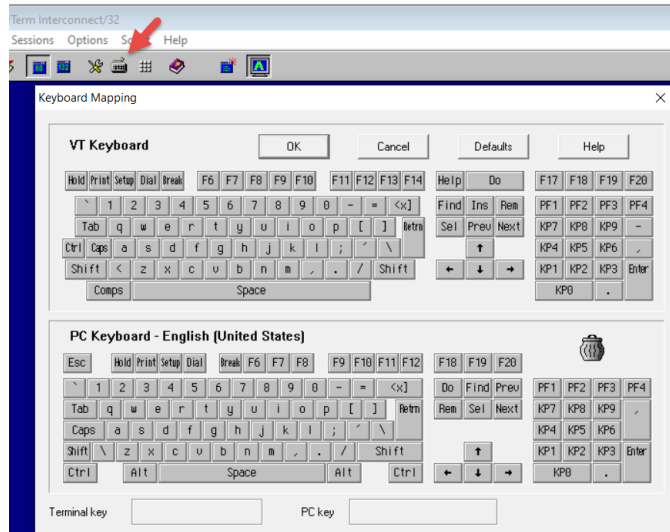
Your set up should now be complete.

If your keyboard does not have an extended number pad or does not have F keys at the top, you can then use the following steps to map those keys on your keyboard.

Click the Keyboard Mapping icon at the top of the screen.



That will open this popup:



You can then assign specific keys (that don't exist on your physical keyboard) that you see in the top VT Keyboard image to a key in the lower PC Keyboard. Keep in mind it is best to assign a combination of **Ctrl** with the newly assigned letter.

**Example:**

Assign PF1 to a *combination* of CTRL and the letter P.

Click the CTRL button on the PC Keyboard.

Click and hold on the PF1 button on the VT Keyboard and then drag it to the P on the PC Keyboard.

Click OK.

After that, while working in PowerTerm, to press PF1, instead press CTRL-P.

If you want to restore back to the original setup, click the Keyboard Mapping icon again, click Defaults and then OK.

